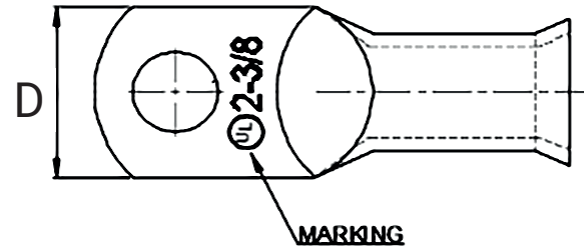
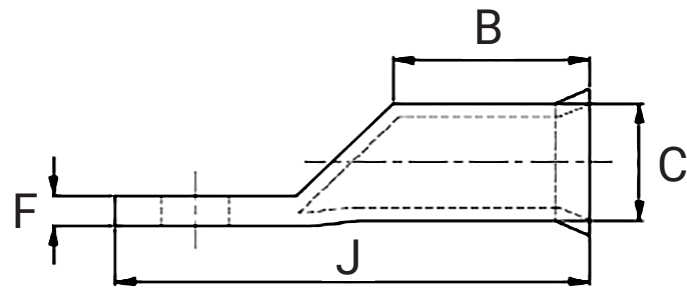




A B C D E F G H I J K

1  
2  
3  
4  
5  
5  
6  
7

1  
2  
3  
4  
5  
5  
6  
7



TOLERANCE  
UNLESS OTHERWISE SPECIFIED

0 > mm ±	ANGLE
	0° > ° REF ±

ITEM	CABLE SIZE	STUD SIZE	BARREL ID	BARREL LENGTH	PALM WIDTH	PALM THICKNESS	TOTAL LENGTH
			C	B	D	F	J
906400	8	#10	0.280	0.470	0.465	0.055	1.313
906405	6	#10	0.312	0.500	0.465	0.070	1.469
906415	4	#10	0.360	0.470	0.545	0.083	1.313
906500	8	1/4"	0.280	0.470	0.465	0.055	1.313
906505	6	1/4"	0.312	0.500	0.540	0.070	1.469
906515	4	1/4"	0.360	0.530	0.545	0.083	1.531
906525	2	1/4"	0.425	0.600	0.650	0.095	1.690
906535	1	1/4"	0.460	0.630	0.645	0.100	1.718
906545	1/0	1/4"	0.510	0.690	0.725	0.102	1.845
906555	2/0	1/4"	0.560	0.862	0.825	0.100	2.236
906565	3/0	1/4"	0.620	0.800	0.910	0.100	2.270
906575	4/0	1/4"	0.685	1.020	1.015	0.100	2.563
906600	8	5/16"	0.280	0.470	0.465	0.055	1.313
906605	6	5/16"	0.312	0.500	0.540	0.065	1.469
906615	4	5/16"	0.360	0.530	0.545	0.083	1.531
906625	2	5/16"	0.425	0.600	0.650	0.095	1.690
906635	1	5/16"	0.460	0.630	0.645	0.100	1.718
906645	1/0	5/16"	0.510	0.690	0.725	0.102	1.845
906655	2/0	5/16"	0.560	0.862	0.825	0.100	2.236
906665	3/0	5/16"	0.620	0.800	0.910	0.100	2.270
906675	4/0	5/16"	0.685	1.020	1.015	0.100	2.563
906685	250	5/16"	0.750	1.020	1.090	0.130	2.906

A B C D E F G H I J K

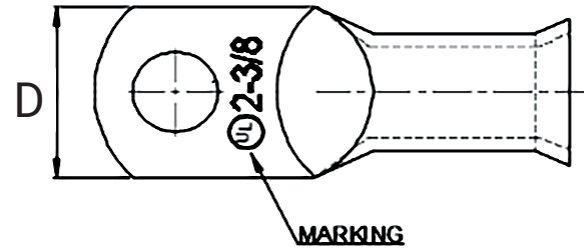
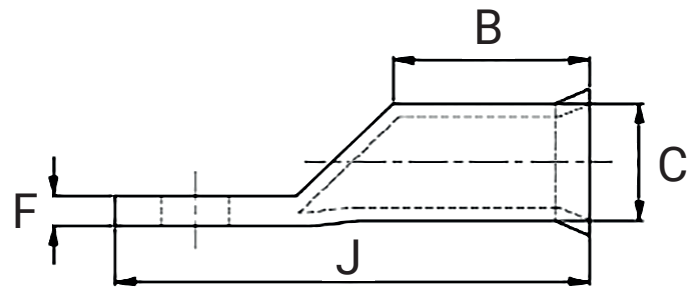





A B C D E F G H I J K

1  
2  
3  
4  
5  
6  
7

1  
2  
3  
4  
5  
6  
7



MARKING

	TOLERANCE UNLESS OTHERWISE SPECIFIED	
	0 > mm ±	ANGLE
		0° > ° REF ±

ITEM	CABLE SIZE	STUD SIZE	BARREL ID	BARREL LENGTH	PALM WIDTH	PALM THICKNESS	TOTAL LENGTH
			C	B	D	F	J
906800	8	3/8"	0.280	0.470	0.590	0.060	1.313
906805	6	3/8"	0.312	0.500	0.540	0.065	1.469
906815	4	3/8"	0.360	0.530	0.545	0.083	1.531
906825	2	3/8"	0.425	0.600	0.650	0.095	1.690
906835	1	3/8"	0.460	0.630	0.645	0.095	1.718
906845	1/0	3/8"	0.510	0.690	0.725	0.102	1.845
906855	2/0	3/8"	0.560	0.862	0.825	0.100	2.268
906865	3/0	3/8"	0.620	0.800	0.910	0.100	2.270
906875	4/0	3/8"	0.685	1.020	1.015	0.100	2.563
906885	250	3/8"	0.750	1.020	1.090	0.130	2.906
907800	8	1/2"	0.280	0.470	0.790	0.040	1.469
907805	6	1/2"	0.312	0.500	0.670	0.047	1.542
907815	4	1/2"	0.360	0.530	0.765	0.050	1.688
907825	2	1/2"	0.425	0.600	0.750	0.095	1.750
907835	1	1/2"	0.460	0.630	0.750	0.100	1.845
907845	1/0	1/2"	0.510	0.690	0.725	0.102	1.890
907855	2/0	1/2"	0.560	0.862	0.825	0.100	2.268
907865	3/0	1/2"	0.620	0.800	0.910	0.100	2.270
907875	4/0	1/2"	0.685	1.020	1.015	0.100	2.563
907885	250	1/2"	0.750	1.020	1.090	0.130	2.906

A B C D E F G H I J K

